

# *Willowbark Veterinary Pharmacy*

Dedicated to affordable health care for pets throughout New Zealand

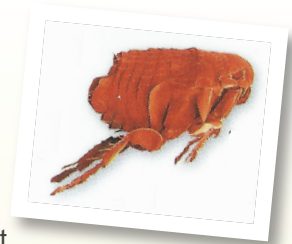


## Summer's here.... stay safe!

That's right, it's that time of year that we all look forward to... time to dust off the BBQ and togs. It's also time to look forward to days at the beach and long walks with your canine companion. This month, we've put together a newsletter with summer and holiday safety in mind.



## Pesky Parasites



Whilst worming and flea treatments should be done routinely throughout the year, it's even more important to continue this throughout the summer months. Not only do fleas love a warmer climate but your pets are likely to be going outdoors more and possibly having more contact with other animals. Spending more time outdoors and walks in the park means a higher likelihood of contracting worms. The use of a combination flea and worming treatment (e.g. Advocate, Broadline or Revolution) is a very convenient way of keeping your pet protected.



## Handy holiday hints

Some hints and tips for keeping your pet safe this summer holiday.

### Sunny days

- 1) It's a good idea to walk your dogs in the mornings and/or evenings to avoid the hottest part of the day
- 2) Take a drink bottle and water bowl with you on walks, because dogs can overheat quickly and even get dehydrated if they over do it
- 3) Never leave a dog in the car whilst you're shopping. Even if you crack the window, the temperature rapidly rises to dangerous levels
- 4) White cats and dogs with exposed pink skin could do with a coat of sunscreen (for example [FiltaClear](#) or [FiltaBac](#)) for some protection from those harmful rays



### Check your cars, sheds & garages

Cats will hide in all sorts of unusual places. If you're going away on holiday this summer, please take a moment to check your car, shed and/or garage before you leave. This will help you avoid having a stow-away in your car or even a trapped cat with no access to food and water.

### Play Time

Most dogs love to chase balls or frisbees in the park which is great exercise. It is very common for people to also throw sticks for their dogs... we would urge you not to do this because although convenient and free, we have seen some nasty injuries to the mouth, throat or neck if the stick lands awkwardly whilst they're chasing it.





## Festive foods – are they ok for my pet?

A lot of what we eat is fine for our pets (not that we recommend this of course!) but it's worth mentioning some common foods that are unsuitable for our pets. Mostly, it's not good for their waistline but some foods or ingredients are hazardous or even toxic.

Whilst most pets will enjoy chewing on bones, we recommend keeping this to large raw beef bones from your butcher. Unfortunately, cooked bones can splinter into sharp shards, which can damage the intestine as they pass through and cause peritonitis. Small bones or splintered bones can even cause an intestinal obstruction. Whilst cooked chicken bones tend to be the worst, it's a good idea to avoid all cooked bones.

Most households will have some chocolate hanging around at this time of the year. As much as you might want to share, remember that chocolate is toxic to dogs. It contains theobromine and caffeine, which cause symptoms from vomiting and diarrhea to seizures, coma and death. The darker the chocolate, the more it contains but it is best to just avoid it.

Some fruit in small quantities, like apples, are fine for dogs to eat, but not grapes and raisins. Ingestion can result in acute kidney failure in dogs. The nature of the toxicity and the amount of fruit that can cause it are not yet fully understood. It is safest just to completely avoid them.

Onions and other members of the allium family (e.g. garlic, leek) are toxic to cats and dogs. They cause a potentially life threatening anaemia. As it is a very common ingredient (e.g. sauces and stuffing) please bare it in mind if your pets get leftovers.

Whilst they aren't foods, Lily plants and flowers are extremely toxic to cats, and the ingestion of any part (pollen included) causes severe acute kidney failure-worth noting as there is a chance you'll receive them as a gift over Christmas.

So please think twice before you share the leftover Christmas dinner with your furry family, because it may contain some of the problem foods listed above.



## Tasty Dog Biscuit Recipe

**A tasty home made treat for your pet.**

*1 cup bran  
 1 1/2 cups wholemeal flour  
 1/2 cup olive oil  
 1/2 cup sunflower seeds  
 1 cup oatmeal  
 1 egg  
 1 cup milk or water  
 1 teaspoon brewers yeast  
 1/2 teaspoon salt or kelp  
 1/2 cup coconut  
 Small amount parsley*

### Method:

- 1) Mix everything together and form balls or shapes with your hands.
- 2) Place on baking tray and flatten with a fork
- 3) Bake slowly at 150°C until hard (about 40 - 45 minutes)
- 4) Cool on a wire rack

# In the next issue...

We'll be looking at... Vaccines

Wishing you all a Merry Christmas and  
a Happy New Year!

